



THE ART OF LIVING
HEALTH & EDUCATION TRUST



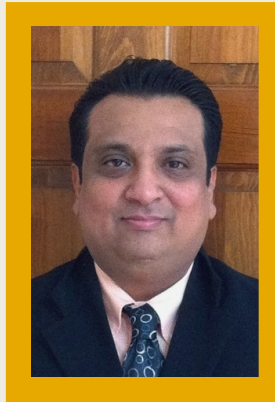
ANNUAL REPORT 2010

Message from the President

Mr. Raj Shah: President 2010

Dear friends:

It has been a wonderful year for our growing organization. Many developments have swiftly taken place in 2010, both at our Washington D.C. headquarters and at our groundbreaking initiative in Orissa, India, the construction of a world-class university. It is with pleasure that I have handed my role as president to Vinesh, and I look forward to another excitement-filled year. Thank you for your continued support.



Mr. Vinesh R. Virani, current President

As AOLHET's new President, I am eager to present this report on the developments of 2010. We established a presence and full-time staff support in Washington, DC, and started to build a base of volunteers throughout the U.S. Academic planning, leveling and construction are taking place at Sri Sri University in Orissa, India, with social outreach programs spreading across the region. We are excited to begin this first phase of our project, and best wishes to our friends and supporters for the year ahead.

Table of contents

AOLHET in 2010	p.3
Development of Sri Sri University in 2010	p. 4
Wall of Gratitude	p. 7
Financial Statement	p. 8

The Art of Living Health and Education Trust in 2010

Who we are

AOLHET is a 501(c)(3) nonprofit public charity dedicated to improving the quality and accessibility of healthcare and education. We began our flagship program at Sri Sri University in 2010 and are poised to launch other innovative projects that reduce disparities in access to healthcare and values-based education in the U.S. and worldwide.

Our Mission

The Art of Living Health and Education Trust (AOLHET) envisions a world where everyone has access to quality healthcare and values-based education. Our mission is to foster, promote and support improved education and healthcare in the United States and throughout the world, and to encourage increased public awareness and understanding of the needs of the poor for better education and healthcare.

Sri Sri University (SSU)

In 2010 we launched our flagship program, a capital campaign to build Sri Sri University (SSU) in Orissa, India. The campus is spread over 185 acres on the banks of the Kathjodi River, 24 kilometers from the capital city of Bhubaneswar. In keeping with our organizational mission, the University will provide a source of sustainable education and healthcare in the surrounding region.



LEARN LEAD SERVE

Efforts in 2010

In 2010, AOLHET set up a broad base to further our organizational mission. We established an office for the first time in Washington, DC, headed by Development Officer Adria Etribou, and set up the structure and procedures necessary to become an efficient nonprofit. We also undertook our first awareness-raising activities in order to garner recognition and support for the organization. Our outreach efforts included a presentation on the importance of value-based education made to the over 2,000 attendees of a North American based Art of Living Conference in July 2010.

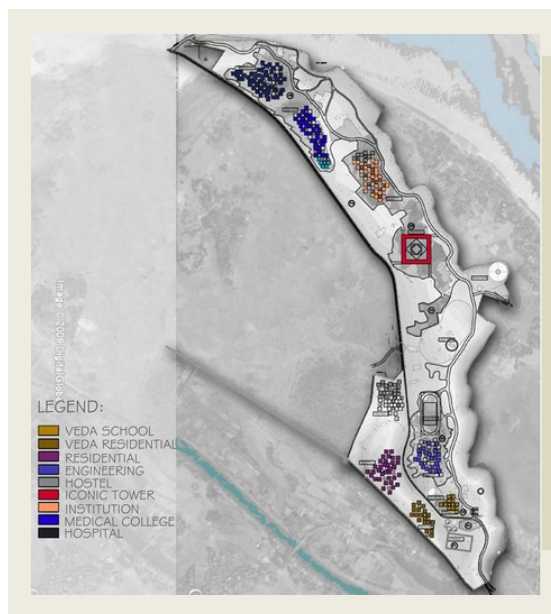
Sri Sri University Developments in 2010

Academics

- As a strategic decision, the opening of the University was postponed from 2011 to 2012.
- Dr. K. C. Mishra - Director of Lal Bhadur Shastri Institute of Management, Delhi has been appointed as the Dean of Sri Sri University - Institute of Management Studies. His appointment begins in March 2011.
- In 2012, the University will commence with the following academic programs:
 - MBA, MBA Agri Business
 - MBA Entrepreneurship
 - BBA
 - B. Tech (Computer Science, Electronics & Communications, Environmental & Energy Engineering, and Town Urban Planning Engineering)
 - MA, Osteopathic Medicine

Architectural planning

- In 2010 SSU's team worked closely with several architects to perfect the plans of the university and maintain their focus on environmental responsibility and cost efficiency. The campus design takes advantage of the existing contours of the land as a natural foundation. Water is an integral part of the design, harmonizing with the Kathjodi River that runs along one side of the campus.
- The campus will feature green buildings, solar panels and sustainable landscaping.



Sustainable Design

Infrastructure

- The Government of Orissa allocated approximately 185 acres to the University.
- SSU staff furnished a 3000 Sq. ft corporate office in Bhubaneswar that has been operational from December 2010.
- Begun in 2010: Site preparation work including leveling and road rerouting, development of a master plan, statutory compliance and plan approvals.
- Total construction will span a 7-year period, to occur in multiple phases.



Ground Preparation



Road Construction



*Sri Sri University Office
in Bhubaneswar*

Launch of Sri Sri University

Sri Sri University held its first ever press conference in Bhubaneswar on **August 15, 2010**, announcing that the university will begin operations in the next academic year. The Faculty of Management Studies will offer MBA and BBA programs, while the Institute of Liberal Arts & Sciences will offer a Master's program in Social Work. Vocational training centers will also begin their work.

Social Outreach

Center for Excellence in Vocational Training, Sri Sri University

Enhancing the skills of unemployed and poor youth in villages surrounding the University

In a pilot program called Project Vidya, forty-one rural youth underwent three months of training in masonry and metalworking. In 2010, SSU signed a formal memo of understanding with L&T Public Charitable Trust and L&T Construction & Skills Training Institute to set up a training center in Orissa under the banner of Sri Sri University. This joint venture provides free services that include construction skills training, boarding and lodging, and also imparts Art of Living techniques that encourage sound physical & mental well-being.



Training in Masonry

In addition, a three-month course in cell phone repair took place on the SSU campus during September 2010 under the Department of Social Outreach. Twenty-five youth enrolled in the program. The course is offered in collaboration with BOSE (Bhubanananda Orissa School of Engineering), GoO, Department of Industries, under the Community Development Programme of GoI.

Health Camps in Sandhapur and Bidhyadharpur

In these health camps, graduates of the Youth Leadership Training Program (YLTP) of the Art of Living Foundation, Art of Living teachers and volunteers provided free health and medical services in two villages located near the Sri Sri University campus.

Homes for the Underprivileged

More than ten houses have been constructed in Bidhyadharpur and other surrounding villages that will serve the underprivileged.



Wall of Gratitude

**We would like to express our appreciation for your support.
Through your dedication and service,
we can continue in our mission to learn, lead and serve.**

We offer particular gratitude towards our largest donors from 2010:

Mr. Mandar Apte, Mr. Raghu Daripalli, Mr. Shalin Desai,
Mr. and Mrs. Anurag and Gunjan Jain, Mr. and Mrs. Nilendu Srivastava,
Mr. Jayesh T Patel, Mr. Parag Patel, Mr. Raman Poola, Prolient Group Corp.,
Mr. Phanilatha Vishnubhotla, Mr. Manoj Kumar Warriar.

“Information alone is not education; it is the cultivation of our behavior and attitude. It is our ability to perceive things better. Perception, Observation and Expression, these are three aspects of education that need to be improved”.

Sri Sri Ravi Shankar



Thank you!

Statement of financial position as of December 31, 2010

Assets

Current assets		
Cash and equivalent	125,000	
Prepaid payroll taxes	61	
Net current assets		125,061
Property and equipment		
Equipment and furniture	1,436	
Less: accumulated depreciation	(264)	
Net property and equipment		1,172
Other assets		
Website	2,136	
Organization costs	3,250	
Less: accumulated amortization	(2,242)	
Net other assets		3,144
Total assets		129,377

Liabilities and net assets

Liabilities		
Accrued expenses		767
Total liabilities		767
Net assets		128,610
Total liabilities and net assets		129,377

Statement of activity and change in net assets for the year ended December 31, 2010

Revenues		
Contributions, legacies and bequests		338,797
Expenditures		
Awards and grants	250,000	129,377
Payroll expenses	18,706	
General and administrative	25,882	
Total expenditures		294,588
Change in net assets		44,209
Net assets, January 1, 2010		84,401
Net assets, December 31, 2010		128,610

We need your help!

Please help us to foster health and education throughout the world through:

- Monthly or Annual Giving
- Gift Catalog Giving
- Individual Donations with Corporate Matching
(Ask your company to incorporate us into their matching gift program!)
- Legacies and Bequest
- Gifts in Kind
- Foundation and Corporate Giving
- Volunteering

Send a check payable to “AOLHET” or
donate safely online at: <http://www.aolhet.org/donate>

You can be confident that your contribution will be used diligently to provide opportunities for students to learn, lead and serve.



“You create your own world around you.
You create your own environment. Each of us
in our own way must acknowledge our
responsibility to society”.

Sri Sri Ravi Shankar



The Art of Living Health & Education Trust
2401 15th Street, NW
Washington, DC 20009
Phone: (202) 370-6985 - Email: info@aolhet.org
www.aolhet.org